

PITT
COOKING





Table of Contents

Your kitchen, your story	5
From idea to revolution	6
Cooking with induction	10
Cooking with gas	21
Benefits	24
Outdoor	26
Cooking solutions	31
Induction assortment	38
Gas assortment	64
Outdoor assortment	88
Terms and warranty	94
Contact	95
Downloads	96
Service	98



Your kitchen, your story

Imagine a kitchen designed around your needs, where functionality and aesthetics blend seamlessly. That's PITT Cooking. Our unique burners give you the freedom to turn cooking into a personal experience. Whether you prefer the precision of induction, the familiarity of gas, or a combination of both, PITT Cooking gives you the freedom to create your ideal kitchen setup.

With PITT Cooking, your kitchen becomes more than just a place to cook – it's a space where your personal taste and creativity come to life. Every detail is designed to transform your kitchen into a harmonious blend of functionality and style.

From idea to revolution

PITT Cooking was born from the idea of breaking free from the limitations of traditional cooking and designing a system that offers not only space but also possibilities. What started as an innovative concept evolved into a revolutionary cooking system known worldwide for its refined design and unparalleled performance.

Each of our products is handcrafted in the Netherlands. Our dedicated in-house innovation team continually refines technology and develops bespoke solutions to meet the highest standards. PITT Cooking embodies craftsmanship, premium quality, and an ongoing drive for innovation.

Additionally, our products are designed with efficiency and sustainability in mind.





A kitchen where luxury
and creativity meet

Cooking with induction







Transform your kitchen with induction cooking

Our induction zones combine precision, safety, and a sleek design. The surface stays cool and is easy to clean, making cooking effortless and enjoyable. Intuitive controls and powerful performance allow you to prepare delicious meals in no time. Cooking on induction is not just functional but also stylish, perfectly suited for today's kitchen.

Unique to PITT Cooking are the stepless control knobs that rotate instead of traditional touch controls, enhancing the experience of innovative cooking.







Modern efficiency
and convenience





Cooking with gas

At PITT Cooking, gas cooking is all about experience and precision. Our gas burners bring traditional cooking techniques to life, offering immediate response and unmatched control over the flame. Whether you want to simmer a dish gently or sear at high temperatures, our burners give you the freedom to take on any culinary challenge with confidence.



Traditional techniques
with a modern flair



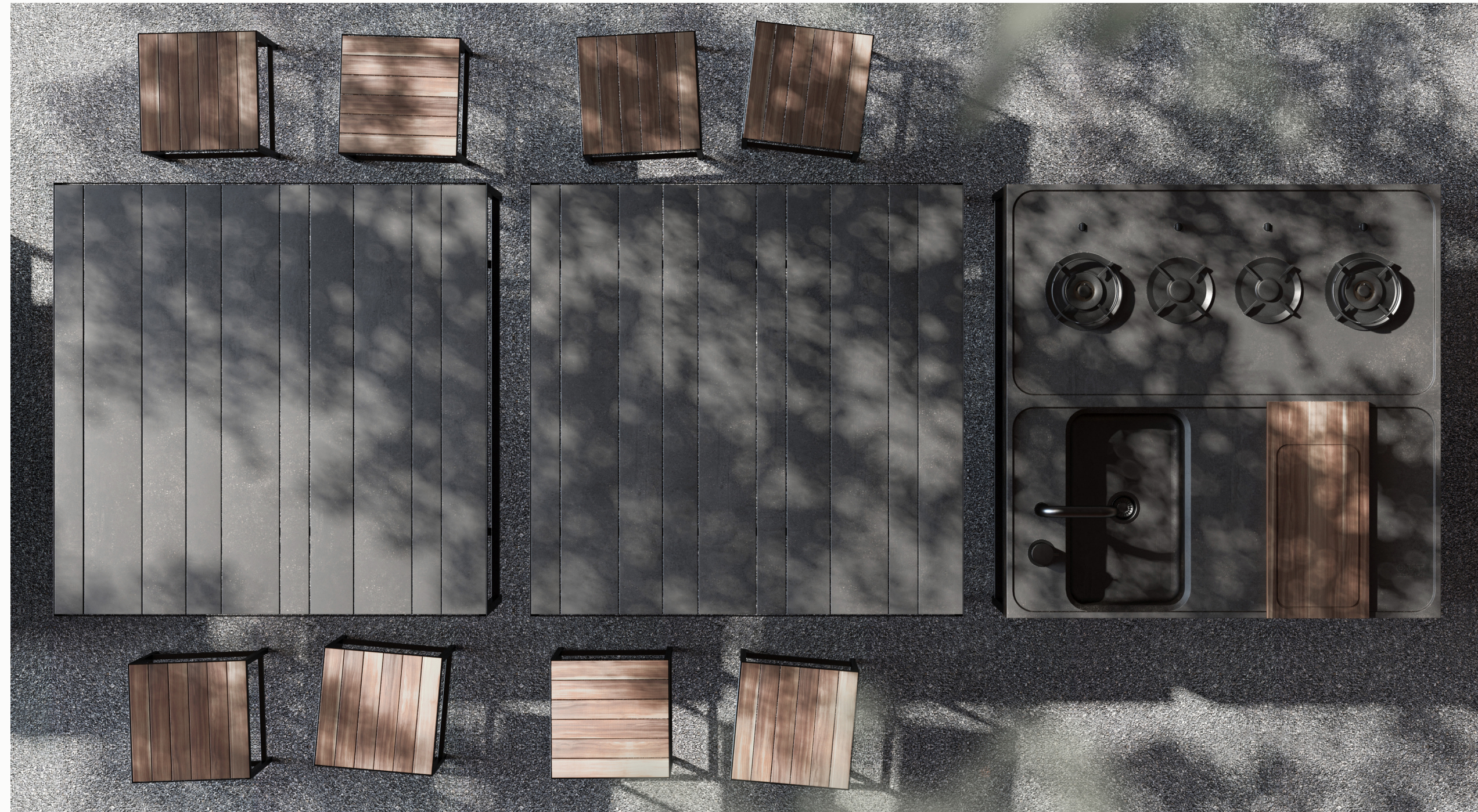
Benefits

- Handmade in the Netherlands for ultimate quality.
- Flexible combinations of gas and induction, tailored to your cooking style.
- Space-saving design, ideal for large pans.
- Seamless integration into any kitchen design.
- Energy-efficient and sustainable.



Outdoor

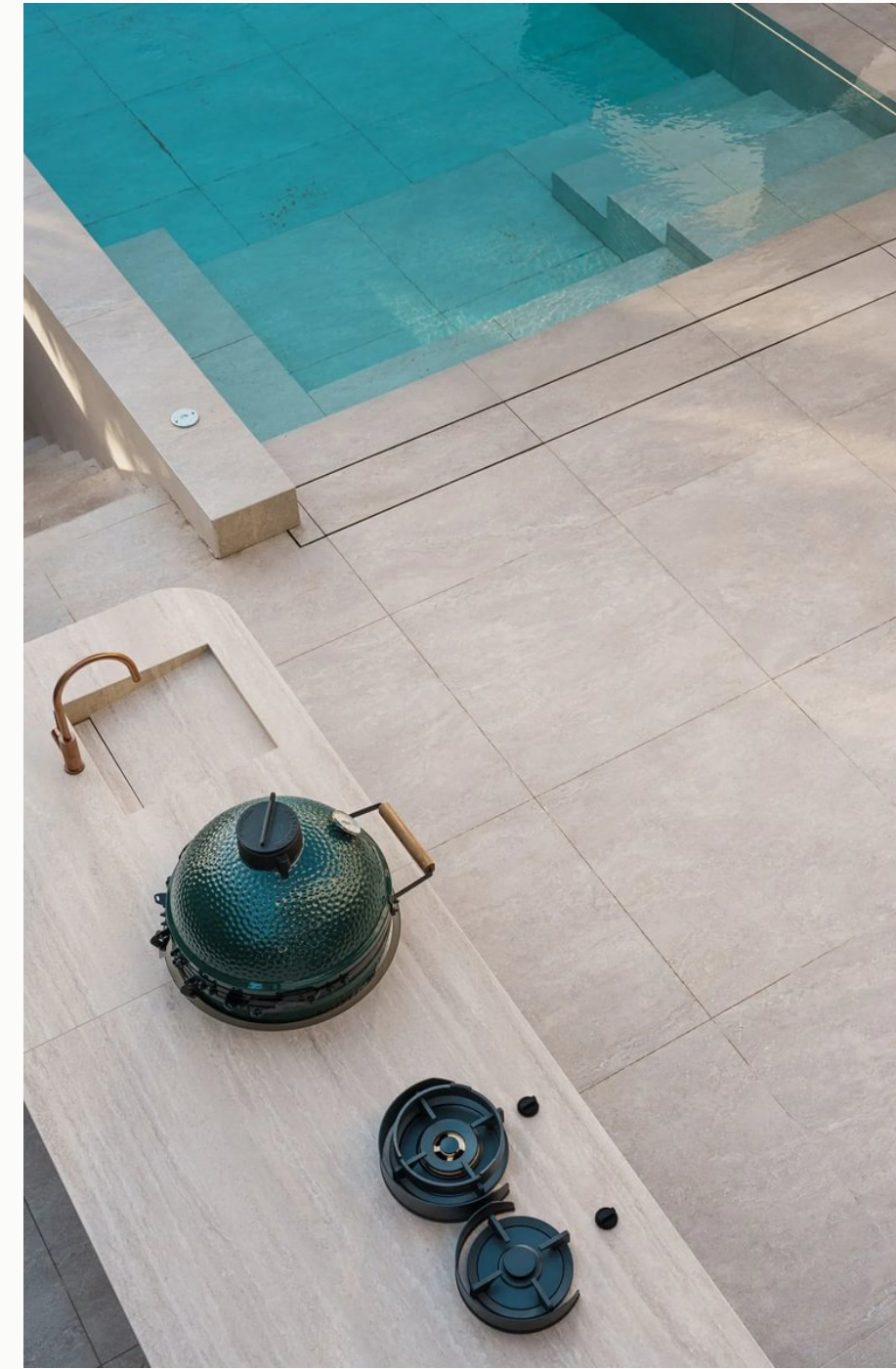
More and more, we see the desire to cook outdoors. The outdoor kitchen has become an essential part of our living space. Preparing the most delicious meals in the open air, enjoying long dinners in the warm evening sun - no longer confined by the walls of our home.





Efficient cooking, even outdoors

The possibilities even extend to outdoor kitchens, where seamless integration into any kitchen design is ensured. Plus, the systems are energy-efficient, allowing you to cook not just efficiently but also sustainably.





Cooking solutions

Every home chef has culinary preferences, which is why PITT Cooking offers the perfect combination of gas burners and induction zones so you can choose the cooking experience that suits your style. Whether you prefer the precise control of gas or the modern efficiency of induction, PITT Cooking meets every cooking need with refinement and innovation.

Additionally, PITT Cooking provides flexible kitchen solutions with combined setups, allowing you to customize your cooking experience. Induction for speed, safety, and sleek design, and gas for the flame.

PITT Cooking: A masterpiece of traditional craftsmanship

At PITT Cooking, we combine traditional craftsmanship with cutting-edge technology. Quality and safety are at the core of our DNA, which is why our gas burners offer precise flame control, and all our kitchen solutions come with built-in safety features. Our induction zones utilize rapid, efficient heat transfer and advanced controls.

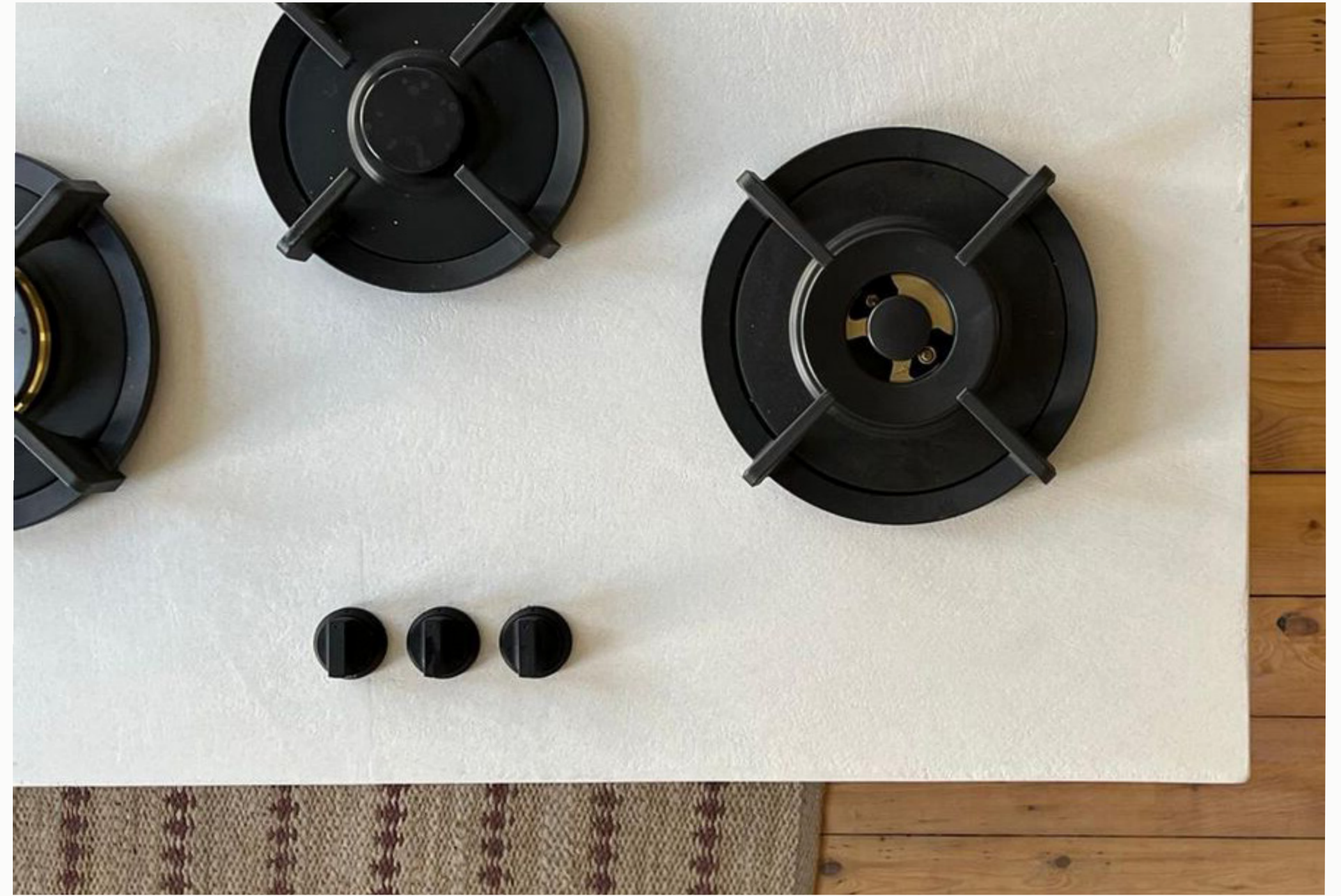
Each system is designed with attention to detail and durability. From luxury knobs to a premium matte glass surface - every element reflects our commitment to quality and aesthetics.





Top Side or Front Side control knobs

Choose between the unique Top Side or Front Side control options. With Top Side control, the aluminium knobs with a soft-touch coating are placed on the countertop, while with Front Side control, these aluminium knobs with optimal grip are positioned at the front of the kitchen worktop. The latter provides more space and freedom of movement on the work surface.





Innovation with peace of mind

At PITT Cooking, safety is a priority. Our certified safety system offers exceptional protection for both gas and induction. From automatic shut-off to overheating protection, our systems are designed to make cooking worry-free.





Induction cooking



Induction assortment

PITT Cooking offers a range of 21 different induction setups, all of which can be combined. Your ideal custom cooking setup can be tailored to your cooking habits and available kitchen space.

 **Small zone / boost**
Power up to 2100 watts

 **Large zone / boost**
Power up to 3000 watts

Akan-I



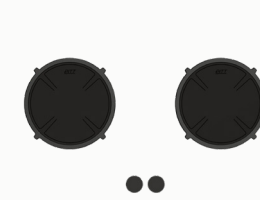
Azuma-I



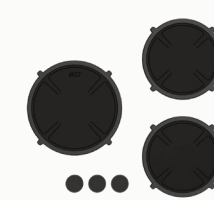
Air-I



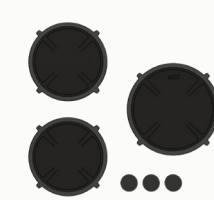
Bromo-I



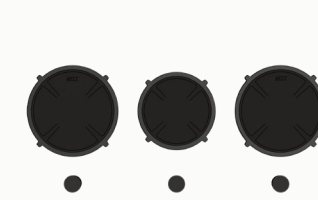
Cima-I



Capital-I



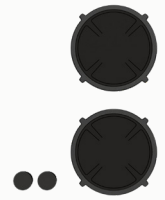
Cusin-I



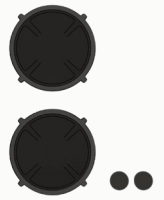
Colo-I



Bandai-I*



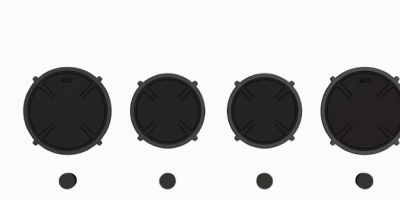
Balut-I



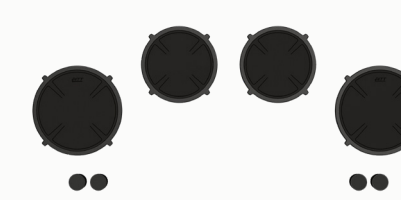
Baluran-I



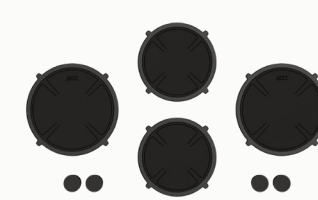
Danau-I



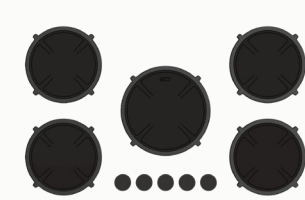
Drum-I



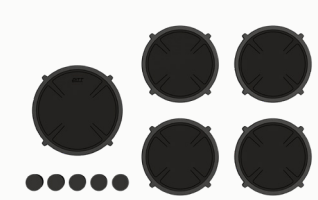
Dempo-I



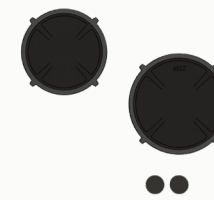
Elbrus-I



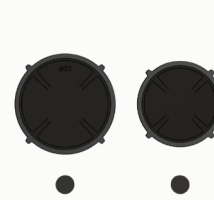
Enep-I



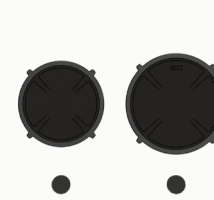
Bennett-I



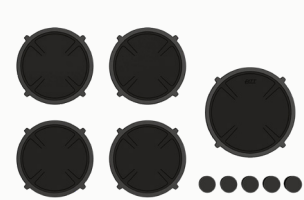
Baula-I



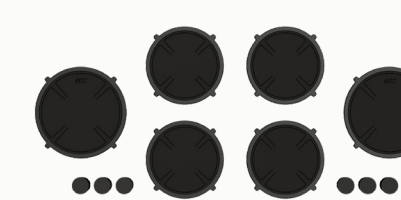
Bely-I



Ebeko-I

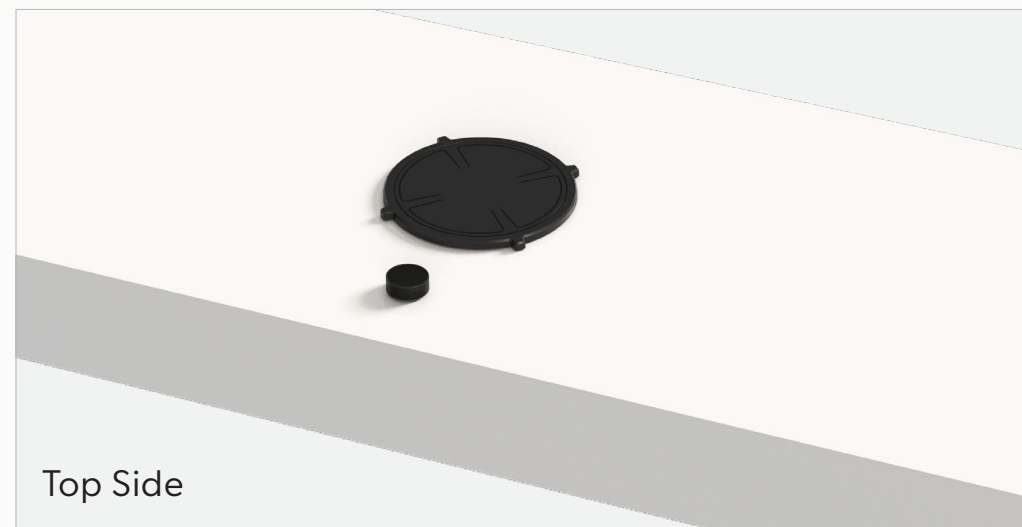


Foessa-I



All models can be combined with each other.

Akan-I



Top Side

Nominal voltage	208 VAC / 240 VAC
Maximum power	1.820W (@208VAC) / 2.100W (@240VAC)
Unit dimensions (LxWxH)	17.60 × 14.57 × 3.54 inches 447 x 370 x 90 mm
Total height (including support set)	4.65 inches 118 mm
Minimum cabinet width	17.72 inches 450 mm
Minimum countertop depth	23.62 inches 600 mm
Countertop thickness	0.16-1.38 inches 4-35 mm
Type of cooking system	Induction
Model edition	Black

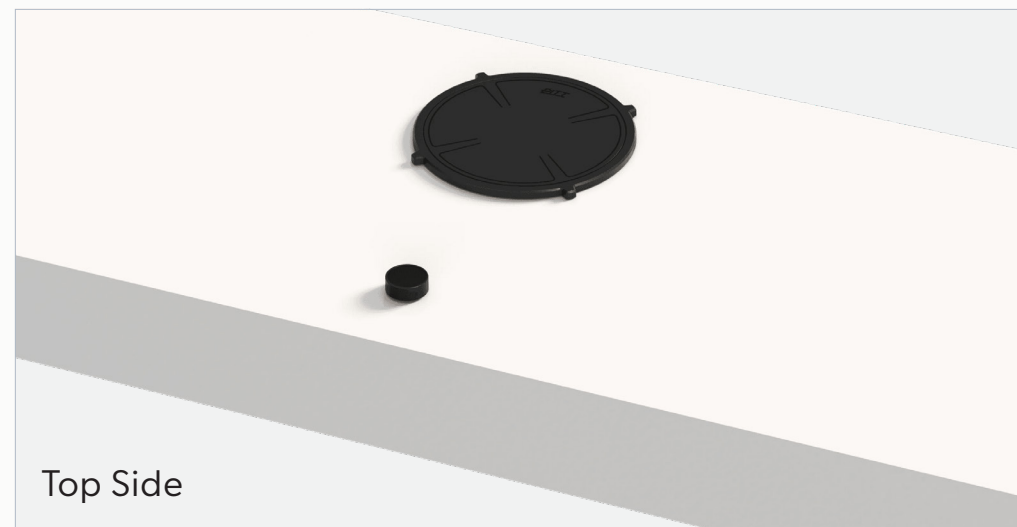


Front Side

Nominal voltage	208 VAC / 240 VAC
Maximum power	1.820W (@208VAC) / 2.100W (@240VAC)
Unit dimensions (LxWxH)	17.60 × 14.57 × 3.54 inches 447 x 370 x 90 mm
Total height (including support set)	4.65 inches 118 mm
Minimum cabinet width	17.72 inches 450 mm
Minimum countertop depth	25.59 inches 650 mm
Countertop thickness	0.16-1.38 inches 4-35 mm
Type of cooking system	Induction
Model edition	Black



Air-I



Top Side

Nominal voltage	208 VAC / 240 VAC
Maximum power	2.600W (@208VAC) / 3.000W (@240VAC)
Unit dimensions (LxWxH)	17.60 × 14.57 × 3.54 inches 447 x 370 x 90 mm
Total height (including support set)	4.65 inches 118 mm
Minimum cabinet width	17.72 inches 450 mm
Minimum countertop depth	23.62 inches 600 mm
Countertop thickness	0.16-1.38 inches 4-35 mm
Type of cooking system	Induction
Model edition	Black

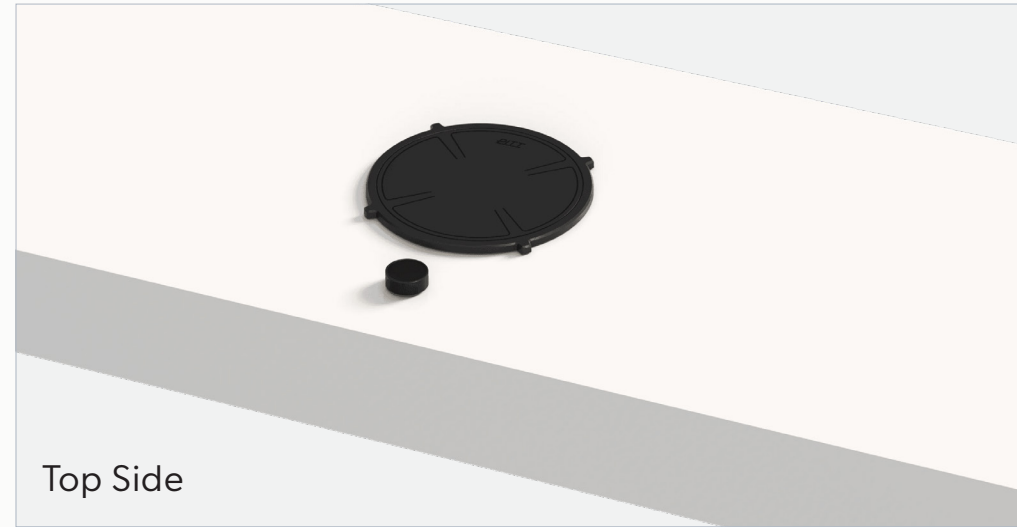


Front Side

Nominal voltage	208 VAC / 240 VAC
Maximum power	2.600W (@208VAC) / 3.000W (@240VAC)
Unit dimensions (LxWxH)	17.60 × 14.57 × 3.54 inches 447 x 370 x 90 mm
Total height (including support set)	4.65 inches 118 mm
Minimum cabinet width	17.72 inches 450 mm
Minimum countertop depth	25.59 inches 650 mm
Countertop thickness	0.16-1.38 inches 4-35 mm
Type of cooking system	Induction
Model edition	Black



Azuma-I



Top Side

Nominal voltage	208 VAC / 240 VAC
Maximum power	2.600W (@208VAC) / 3.000W (@240VAC)
Unit dimensions (LxWxH)	17.60 × 14.57 × 3.54 inches 447 x 370 x 90 mm
Total height (including support set)	4.65 inches 118 mm
Minimum cabinet width	17.72 inches 450 mm
Minimum countertop depth	23.62 inches 600 mm
Countertop thickness	0.16-1.38 inches 4-35 mm
Type of cooking system	Induction
Model edition	Black

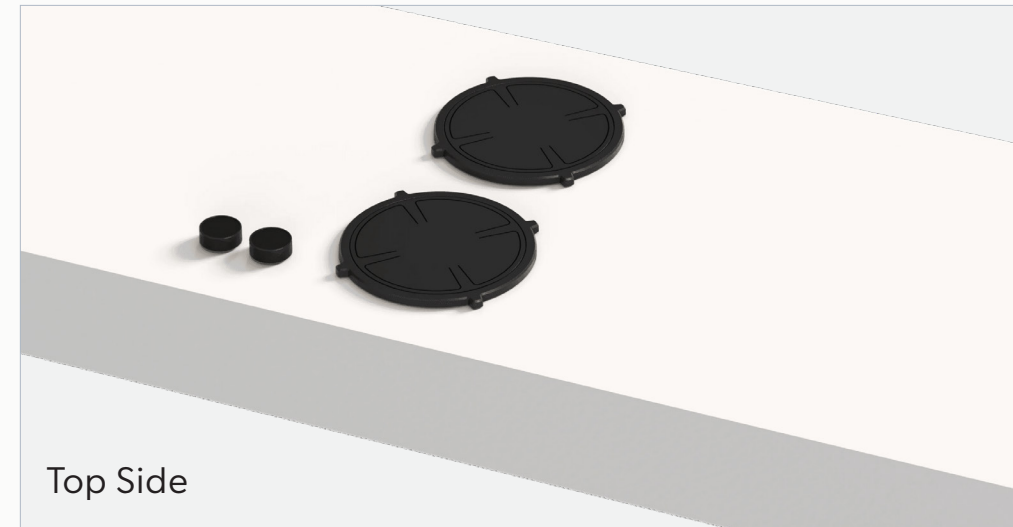


Front Side

Nominal voltage	208 VAC / 240 VAC
Maximum power	2.600W (@208VAC) / 3.000W (@240VAC)
Unit dimensions (LxWxH)	17.60 × 14.57 × 3.54 inches 447 x 370 x 90 mm
Total height (including support set)	4.65 inches 118 mm
Minimum cabinet width	17.72 inches 450 mm
Minimum countertop depth	25.59 inches 650 mm
Countertop thickness	0.16-1.38 inches 4-35 mm
Type of cooking system	Induction
Model edition	Black

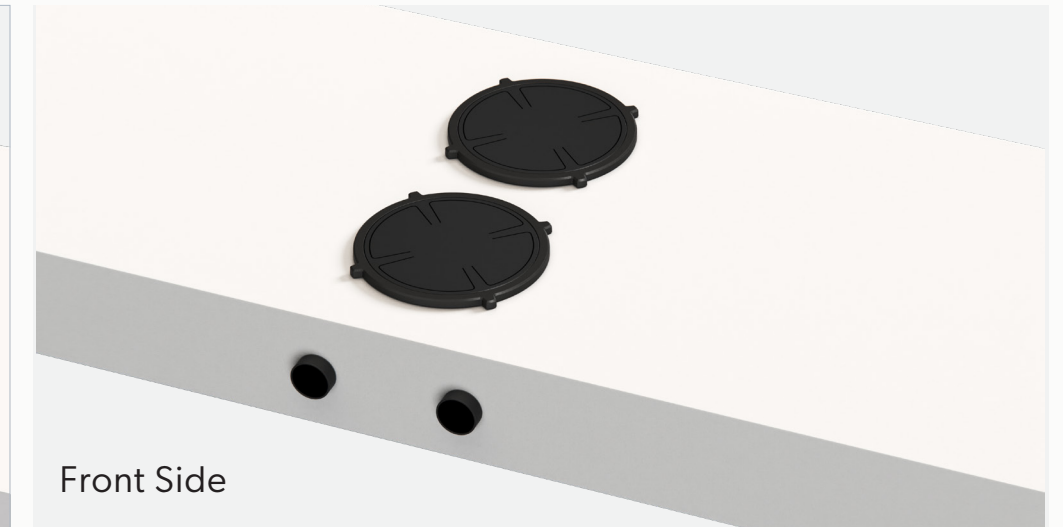


Bandai-I



Top Side

Nominal voltage	208 VAC / 240 VAC
Maximum power	3.328W (@208VAC) / 3.840W (@240VAC)
Unit dimensions (LxWxH)	17.60 × 14.57 × 3.54 inches 447 x 370 x 90 mm
Total height (including support set)	4.65 inches 118 mm
Minimum cabinet width	17.72 inches 450 mm
Minimum countertop depth	23.62 inches 600 mm
Countertop thickness	0.16-1.38 inches 4-35 mm
Type of cooking system	Induction
Model edition	Black

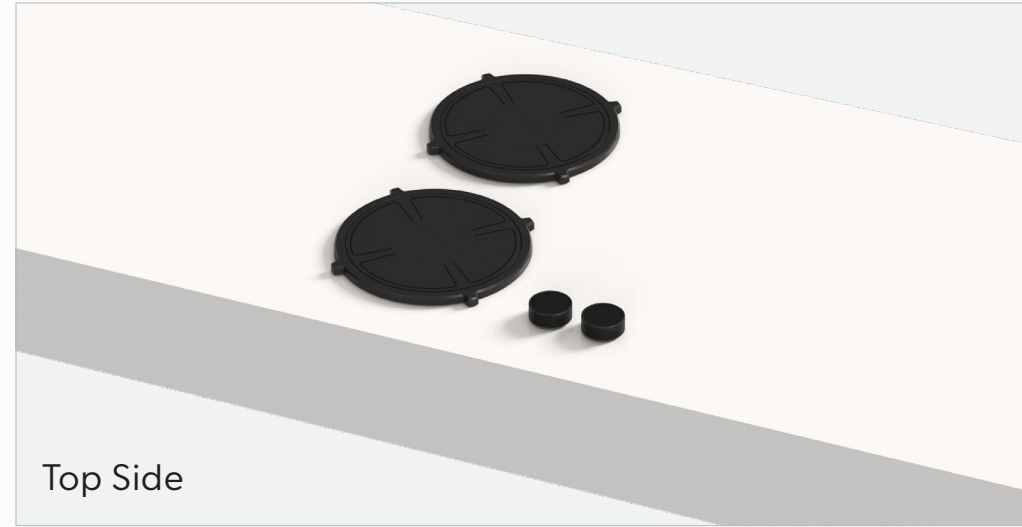


Front Side

Nominal voltage	208 VAC / 240 VAC
Maximum power	3.328W (@208VAC) / 3.840W (@240VAC)
Unit dimensions (LxWxH)	17.60 × 14.57 × 3.54 inches 447 x 370 x 90 mm
Total height (including support set)	4.65 inches 118 mm
Minimum cabinet width	17.72 inches 450 mm
Minimum countertop depth	25.59 inches 650 mm
Countertop thickness	0.16-1.38 inches 4-35 mm
Type of cooking system	Induction
Model edition	Black

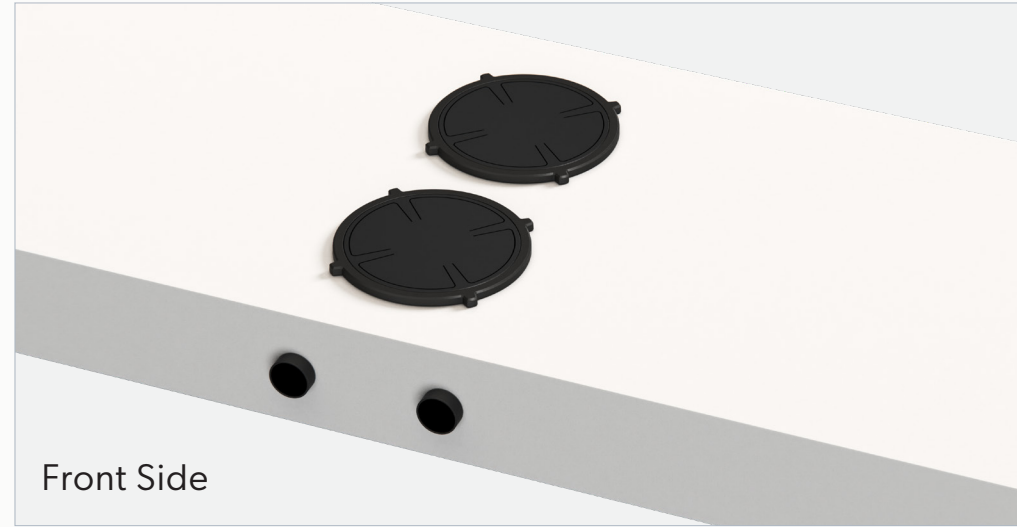


Balut-I



Top Side

Nominal voltage	208 VAC / 240 VAC
Maximum power	3.328W (@208VAC) / 3.840W (@240VAC)
Unit dimensions (LxWxH)	17.60 × 14.57 × 3.54 inches 447 x 370 x 90 mm
Total height (including support set)	4.65 inches 118 mm
Minimum cabinet width	17.72 inches 450 mm
Minimum countertop depth	23.62 inches 600 mm
Countertop thickness	0.16-1.38 inches 4-35 mm
Type of cooking system	Induction
Model edition	Black



Front Side

Nominal voltage	208 VAC / 240 VAC
Maximum power	3.328W (@208VAC) / 3.840W (@240VAC)
Unit dimensions (LxWxH)	17.60 × 14.57 × 3.54 inches 447 x 370 x 90 mm
Total height (including support set)	4.65 inches 118 mm
Minimum cabinet width	17.72 inches 450 mm
Minimum countertop depth	25.59 inches 650 mm
Countertop thickness	0.16-1.38 inches 4-35 mm
Type of cooking system	Induction
Model edition	Black

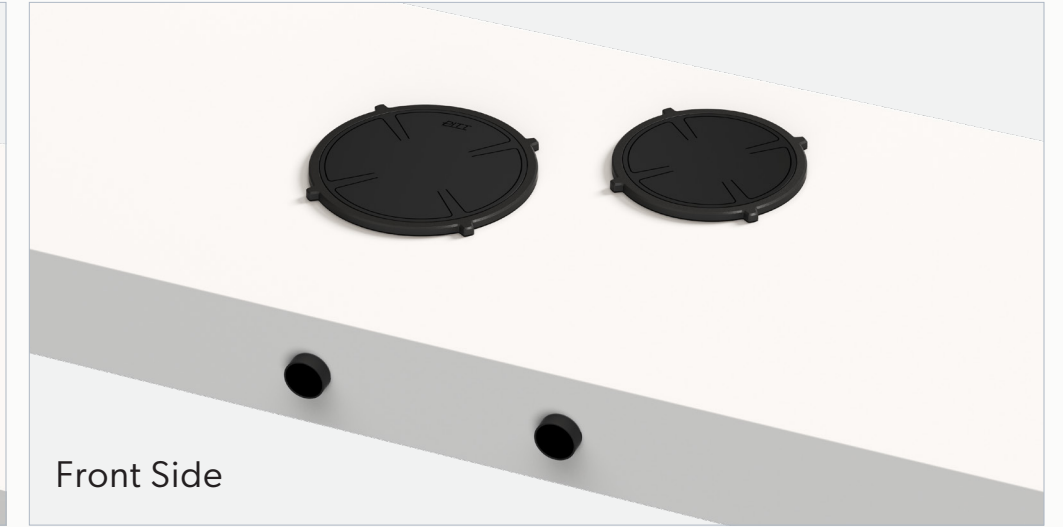


Baluran-I



Top Side

Nominal voltage	208 VAC / 240 VAC
Maximum power	3.328W (@208VAC) / 3.840W (@240VAC)
Unit dimensions (LxWxH)	17.60 × 21.61 × 3.54 inches 447 x 549 x 90 mm
Total height (including support set)	4.65 inches 118 mm
Minimum cabinet width	23.62 inches 600 mm
Minimum countertop depth	23.62 inches 600 mm
Countertop thickness	0.16-1.38 inches 4-35 mm
Type of cooking system	Induction
Model edition	Black



Front Side

Nominal voltage	208 VAC / 240 VAC
Maximum power	3.328W (@208VAC) / 3.840W (@240VAC)
Unit dimensions (LxWxH)	17.60 × 21.61 × 3.54 inches 447 x 549 x 90 mm
Total height (including support set)	4.65 inches 118 mm
Minimum cabinet width	23.62 inches 600 mm
Minimum countertop depth	25.59 inches 650 mm
Countertop thickness	0.16-1.38 inches 4-35 mm
Type of cooking system	Induction
Model edition	Black

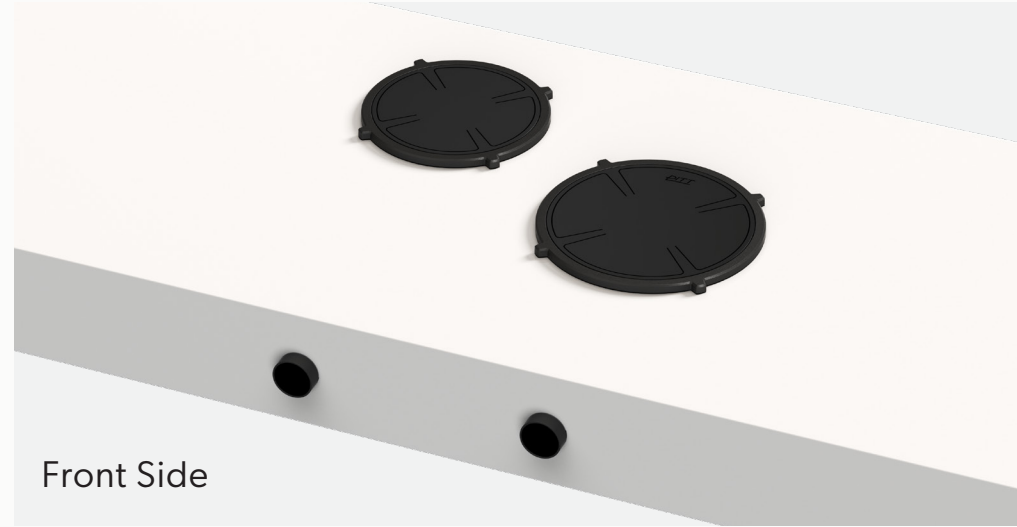


Bennett-I



Top Side

Nominal voltage	208 VAC / 240 VAC
Maximum power	3.328W (@208VAC) / 3.840W (@240VAC)
Unit dimensions (LxWxH)	17.60 × 21.61 × 3.54 inches 447 x 549 x 90 mm
Total height (including support set)	4.65 inches 118 mm
Minimum cabinet width	23.62 inches 600 mm
Minimum countertop depth	23.62 inches 600 mm
Countertop thickness	0.16-1.38 inches 4-35 mm
Type of cooking system	Induction
Model edition	Black

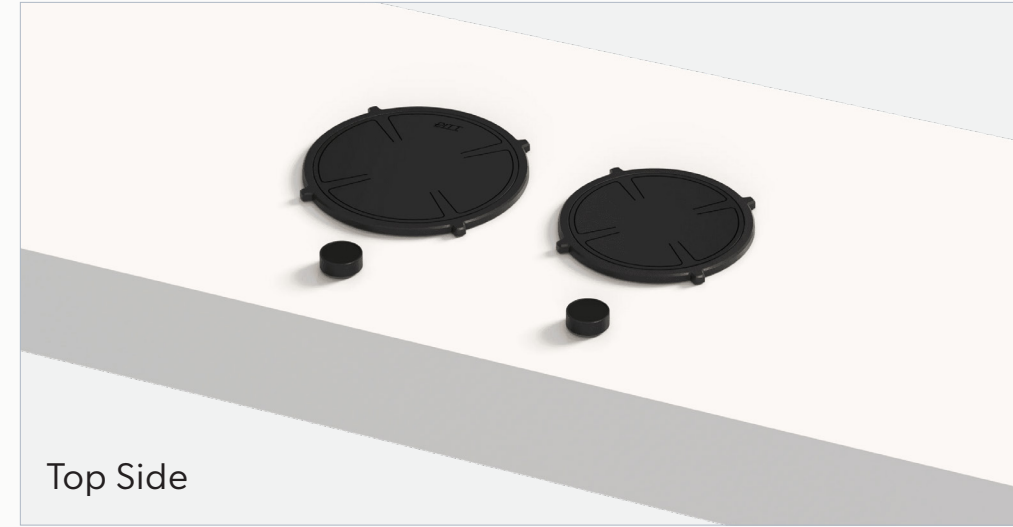


Front Side

Nominal voltage	208 VAC / 240 VAC
Maximum power	3.328W (@208VAC) / 3.840W (@240VAC)
Unit dimensions (LxWxH)	17.60 × 21.61 × 3.54 inches 447 x 549 x 90 mm
Total height (including support set)	4.65 inches 118 mm
Minimum cabinet width	23.62 inches 600 mm
Minimum countertop depth	25.59 inches 650 mm
Countertop thickness	0.16-1.38 inches 4-35 mm
Type of cooking system	Induction
Model edition	Black

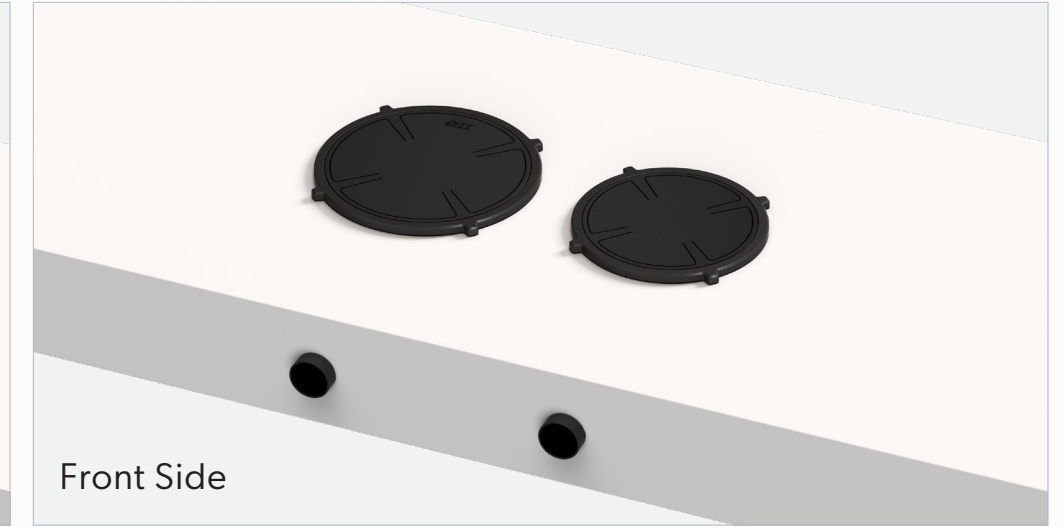


Baula-I



Top Side

Nominal voltage	208 VAC / 240 VAC
Maximum power	3.328W (@208VAC) / 3.840W (@240VAC)
Unit dimensions (LxWxH)	17.60 × 21.61 × 3.54 inches 447 x 549 x 90 mm
Total height (including support set)	4.65 inches 118 mm
Minimum cabinet width	23.62 inches 600 mm
Minimum countertop depth	23.62 inches 600 mm
Countertop thickness	0.16-1.38 inches 4-35 mm
Type of cooking system	Induction
Model edition	Black

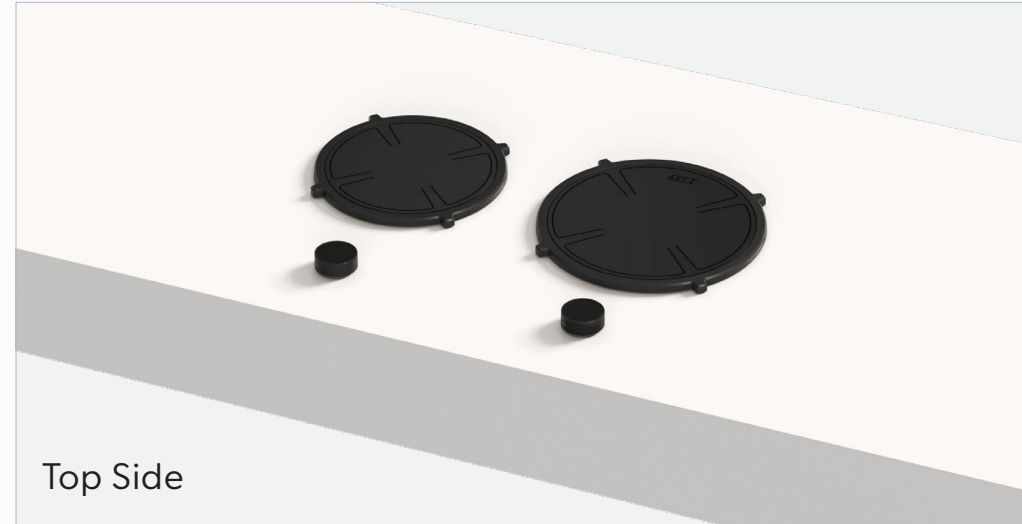


Front Side

Nominal voltage	208 VAC / 240 VAC
Maximum power	3.328W (@208VAC) / 3.840W (@240VAC)
Unit dimensions (LxWxH)	17.60 × 21.61 × 3.54 inches 447 x 549 x 90 mm
Total height (including support set)	4.65 inches 118 mm
Minimum cabinet width	23.62 inches 600 mm
Minimum countertop depth	25.59 inches 650 mm
Countertop thickness	0.16-1.38 inches 4-35 mm
Type of cooking system	Induction
Model edition	Black

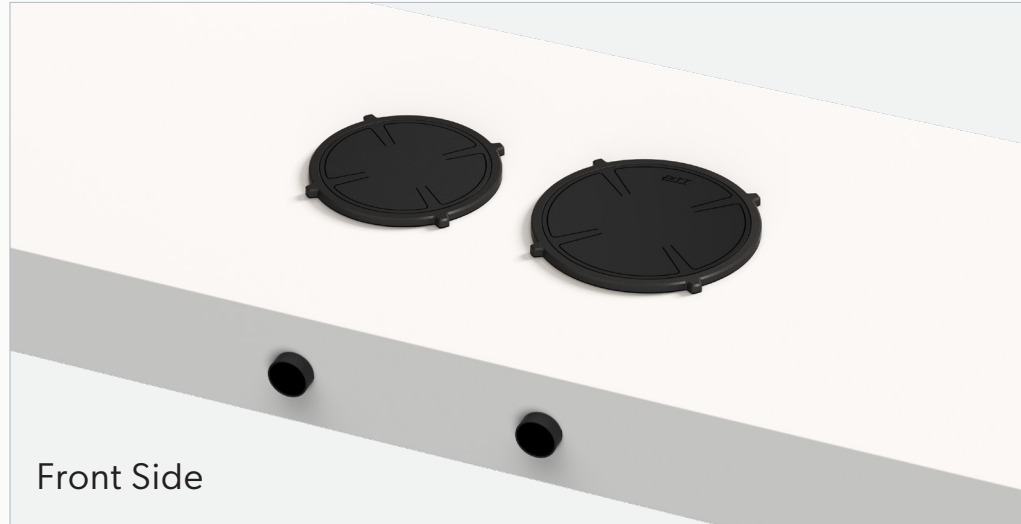


Bely-I



Top Side

Nominal voltage	208 VAC / 240 VAC
Maximum power	3.328W (@208VAC) / 3.840W (@240VAC)
Unit dimensions (LxWxH)	17.60 × 21.61 × 3.54 inches 447 x 549 x 90 mm
Total height (including support set)	4.65 inches 118 mm
Minimum cabinet width	23.62 inches 600 mm
Minimum countertop depth	23.62 inches 600 mm
Countertop thickness	0.16-1.38 inches 4-35 mm
Type of cooking system	Induction
Model edition	Black



Front Side

Nominal voltage	208 VAC / 240 VAC
Maximum power	3.328W (@208VAC) / 3.840W (@240VAC)
Unit dimensions (LxWxH)	17.60 × 21.61 × 3.54 inches 447 x 549 x 90 mm
Total height (including support set)	4.65 inches 118 mm
Minimum cabinet width	23.62 inches 600 mm
Minimum countertop depth	25.59 inches 650 mm
Countertop thickness	0.16-1.38 inches 4-35 mm
Type of cooking system	Induction
Model edition	Black



Bromo-I



Top Side

Nominal voltage	208 VAC / 240 VAC
Maximum power	6.000W (@208VAC) / 6.000W (@240VAC)
Unit dimensions (LxWxH)	17.60 × 26.38 × 3.54 inches 447 x 670 x 90 mm
Total height (including support set)	4.65 inches 118 mm
Minimum cabinet width	31.50 inches 800 mm
Minimum countertop depth	23.62 inches 600 mm
Countertop thickness	0.16-1.38 inches 4-35 mm
Type of cooking system	Induction
Model edition	Black



Front Side

Nominal voltage	208 VAC / 240 VAC
Maximum power	6.000W (@208VAC) / 6.000W (@240VAC)
Unit dimensions (LxWxH)	17.60 × 26.38 × 3.54 inches 447 x 670 x 90 mm
Total height (including support set)	4.65 inches 118 mm
Minimum cabinet width	31.50 inches 800 mm
Minimum countertop depth	25.59 inches 650 mm
Countertop thickness	0.16-1.38 inches 4-35 mm
Type of cooking system	Induction
Model edition	Black



Cima-I



Top Side

Nominal voltage	208 VAC / 240 VAC
Maximum power	5.928W (@208VAC) / 6.840W (@240VAC)
Unit dimensions (LxWxH)	17.60 × 21.61 × 3.54 inches 447 x 549 x 90 mm
Total height (including support set)	4.65 inches 118 mm
Minimum cabinet width	35.43 inches 900 mm
Minimum countertop depth	23.62 inches 600 mm
Countertop thickness	0.16-1.38 inches 4-35 mm
Type of cooking system	Induction
Model edition	Black



Front Side

Nominal voltage	208 VAC / 240 VAC
Maximum power	5.928W (@208VAC) / 6.840W (@240VAC)
Unit dimensions (LxWxH)	17.60 × 21.61 × 3.54 inches 447 x 549 x 90 mm
Total height (including support set)	4.65 inches 118 mm
Minimum cabinet width	35.43 inches 900 mm
Minimum countertop depth	25.59 inches 650 mm
Countertop thickness	0.16-1.38 inches 4-35 mm
Type of cooking system	Induction
Model edition	Black



Capital-I



Top Side

Nominal voltage	208 VAC / 240 VAC
Maximum power	5.928W (@208VAC) / 6.840W (@240VAC)
Unit dimensions (LxWxH)	17.60 × 21.61 × 3.54 inches 447 x 549 x 90 mm
Total height (including support set)	4.65 inches 118 mm
Minimum cabinet width	35.43 inches 900 mm
Minimum countertop depth	23.62 inches 600 mm
Countertop thickness	0.16-1.38 inches 4-35 mm
Type of cooking system	Induction
Model edition	Black



Front Side

Nominal voltage	208 VAC / 240 VAC
Maximum power	5.928W (@208VAC) / 6.840W (@240VAC)
Unit dimensions (LxWxH)	17.60 × 21.61 × 3.54 inches 447 x 549 x 90 mm
Total height (including support set)	4.65 inches 118 mm
Minimum cabinet width	35.43 inches 900 mm
Minimum countertop depth	25.59 inches 650 mm
Countertop thickness	0.16-1.38 inches 4-35 mm
Type of cooking system	Induction
Model edition	Black



Cusin-I



Top Side

Nominal voltage	208 VAC / 240 VAC
Maximum power	5.928W (@208VAC) / 6.840W (@240VAC)
Unit dimensions (LxWxH)	17.60 × 33.82 × 3.54 inches 447 x 859 x 90 mm
Total height (including support set)	4.65 inches 118 mm
Minimum cabinet width	35.43 inches 900 mm
Minimum countertop depth	23.62 inches 600 mm
Countertop thickness	0.16-1.38 inches 4-35 mm
Type of cooking system	Induction
Model edition	Black



Front Side

Nominal voltage	208 VAC / 240 VAC
Maximum power	5.928W (@208VAC) / 6.840W (@240VAC)
Unit dimensions (LxWxH)	17.60 × 33.82 × 3.54 inches 447 x 859 x 90 mm
Total height (including support set)	4.65 inches 118 mm
Minimum cabinet width	35.43 inches 900 mm
Minimum countertop depth	25.59 inches 650 mm
Countertop thickness	0.16-1.38 inches 4-35 mm
Type of cooking system	Induction
Model edition	Black



Colo-I



Top Side

Nominal voltage	208 VAC / 240 VAC
Maximum power	5.928W (@208VAC) / 6.840W (@240VAC)
Unit dimensions (LxWxH)	17.60 × 33.82 × 3.54 inches 447 x 859 x 90 mm
Total height (including support set)	4.65 inches 118 mm
Minimum cabinet width	35.43 inches 900 mm
Minimum countertop depth	23.62 inches 600 mm
Countertop thickness	0.16-1.38 inches 4-35 mm
Type of cooking system	Induction
Model edition	Black



Front Side

Nominal voltage	208 VAC / 240 VAC
Maximum power	5.928W (@208VAC) / 6.840W (@240VAC)
Unit dimensions (LxWxH)	17.60 × 33.82 × 3.54 inches 447 x 859 x 90 mm
Total height (including support set)	4.65 inches 118 mm
Minimum cabinet width	35.43 inches 900 mm
Minimum countertop depth	25.59 inches 650 mm
Countertop thickness	0.16-1.38 inches 4-35 mm
Type of cooking system	Induction
Model edition	Black



Danau-I



Top Side

Nominal voltage	208 VAC / 240 VAC
Maximum power	6.656W (@208VAC) / 7.680W (@240VAC)
Unit dimensions (LxWxH)	17.60 × 45.63 × 3.54 inches 447 x 1159 x 90 mm
Total height (including support set)	4.65 inches 118 mm
Minimum cabinet width	47.24 inches 1200 mm
Minimum countertop depth	23.62 inches 600 mm
Countertop thickness	0.16-1.38 inches 4-35 mm
Type of cooking system	Induction
Model edition	Black



Front Side

Nominal voltage	208 VAC / 240 VAC
Maximum power	6.656W (@208VAC) / 7.680W (@240VAC)
Unit dimensions (LxWxH)	17.60 × 45.63 × 3.54 inches 447 x 1159 x 90 mm
Total height (including support set)	4.65 inches 118 mm
Minimum cabinet width	47.24 inches 1200 mm
Minimum countertop depth	25.59 inches 650 mm
Countertop thickness	0.16-1.38 inches 4-35 mm
Type of cooking system	Induction
Model edition	Black



Drum-I



Top Side

Nominal voltage	208 VAC / 240 VAC
Maximum power	6.656W (@208VAC) / 7.680W (@240VAC)
Unit dimensions (LxWxH)	17.60 × 45.63 × 3.54 inches 447 x 1159 x 90 mm
Total height (including support set)	4.65 inches 118 mm
Minimum cabinet width	47.24 inches 1200 mm
Minimum countertop depth	23.62 inches 600 mm
Countertop thickness	0.16-1.38 inches 4-35 mm
Type of cooking system	Induction
Model edition	Black



Front Side

Nominal voltage	208 VAC / 240 VAC
Maximum power	6.656W (@208VAC) / 7.680W (@240VAC)
Unit dimensions (LxWxH)	17.60 × 45.63 × 3.54 inches 447 x 1159 x 90 mm
Total height (including support set)	4.65 inches 118 mm
Minimum cabinet width	47.24 inches 1200 mm
Minimum countertop depth	25.59 inches 650 mm
Countertop thickness	0.16-1.38 inches 4-35 mm
Type of cooking system	Induction
Model edition	Black



Dempo-I



Top Side

Nominal voltage	208 VAC / 240 VAC
Maximum power	6.656W (@208VAC) / 7.680W (@240VAC)
Unit dimensions (LxWxH)	17.60 × 33.82 × 3.54 inches 447 x 859 x 90 mm
Total height (including support set)	4.65 inches 118 mm
Minimum cabinet width	35.43 inches 900 mm
Minimum countertop depth	23.62 inches 600 mm
Countertop thickness	0.16-1.38 inches 4-35 mm
Type of cooking system	Induction
Model edition	Black



Front Side

Nominal voltage	208 VAC / 240 VAC
Maximum power	6.656W (@208VAC) / 7.680W (@240VAC)
Unit dimensions (LxWxH)	17.60 × 33.82 × 3.54 inches 447 x 859 x 90 mm
Total height (including support set)	4.65 inches 118 mm
Minimum cabinet width	35.43 inches 900 mm
Minimum countertop depth	25.59 inches 650 mm
Countertop thickness	0.16-1.38 inches 4-35 mm
Type of cooking system	Induction
Model edition	Black



Elbrus-I



Top Side

Nominal voltage	208 VAC / 240 VAC
Maximum power	9.256W (@208VAC) / 10.680W (@240VAC)
Unit dimensions (LxWxH)	17.60 × 33.82 × 3.54 inches 447 x 859 x 90 mm
Total height (including support set)	4.65 inches 118 mm
Minimum cabinet width	35.43 inches 900 mm
Minimum countertop depth	23.62 inches 600 mm
Countertop thickness	0.16-1.38 inches 4-35 mm
Type of cooking system	Induction
Model edition	Black



Front Side

Nominal voltage	208 VAC / 240 VAC
Maximum power	9.256W (@208VAC) / 10.680W (@240VAC)
Unit dimensions (LxWxH)	17.60 × 33.82 × 3.54 inches 447 x 859 x 90 mm
Total height (including support set)	4.65 inches 118 mm
Minimum cabinet width	35.43 inches 900 mm
Minimum countertop depth	25.59 inches 650 mm
Countertop thickness	0.16-1.38 inches 4-35 mm
Type of cooking system	Induction
Model edition	Black



Ebeko-I



Top Side

Nominal voltage	208 VAC / 240 VAC
Maximum power	9.256W (@208VAC) / 10.680W (@240VAC)
Unit dimensions (LxWxH)	17.60 × 33.82 × 3.54 inches 447 x 859 x 90 mm
Total height (including support set)	4.65 inches 118 mm
Minimum cabinet width	35.43 inches 900 mm
Minimum countertop depth	23.62 inches 600 mm
Countertop thickness	0.16-1.38 inches 4-35 mm
Type of cooking system	Induction
Model edition	Black



Front Side

Nominal voltage	208 VAC / 240 VAC
Maximum power	9.256W (@208VAC) / 10.680W (@240VAC)
Unit dimensions (LxWxH)	17.60 × 33.82 × 3.54 inches 447 x 859 x 90 mm
Total height (including support set)	4.65 inches 118 mm
Minimum cabinet width	35.43 inches 900 mm
Minimum countertop depth	25.59 inches 650 mm
Countertop thickness	0.16-1.38 inches 4-35 mm
Type of cooking system	Induction
Model edition	Black



Enep-I



Top Side

Nominal voltage	208 VAC / 240 VAC
Maximum power	9.256W (@208VAC) / 10.680W (@240VAC)
Unit dimensions (LxWxH)	17.60 × 33.82 × 3.54 inches 447 x 859 x 90 mm
Total height (including support set)	4.65 inches 118 mm
Minimum cabinet width	47.24 inches 1200 mm
Minimum countertop depth	23.62 inches 600 mm
Countertop thickness	0.16-1.38 inches 4-35 mm
Type of cooking system	Induction
Model edition	Black



Front Side

Nominal voltage	208 VAC / 240 VAC
Maximum power	9.256W (@208VAC) / 10.680W (@240VAC)
Unit dimensions (LxWxH)	17.60 × 33.82 × 3.54 inches 447 x 859 x 90 mm
Total height (including support set)	4.65 inches 118 mm
Minimum cabinet width	47.24 inches 1200 mm
Minimum countertop depth	25.59 inches 650 mm
Countertop thickness	0.16-1.38 inches 4-35 mm
Type of cooking system	Induction
Model edition	Black



Foessa-I



Top Side

Nominal voltage	208 VAC / 240 VAC
Maximum power	9.984W (@208VAC) / 11.520W (@240VAC)
Unit dimensions (LxWxH)	17.60 × 45.63 × 3.54 inches 447 x 1159 x 90 mm
Total height (including support set)	4.65 inches 118 mm
Minimum cabinet width	47.24 inches 1200 mm
Minimum countertop depth	23.62 inches 600 mm
Countertop thickness	0.16-1.38 inches 4-35 mm
Type of cooking system	Induction
Model edition	Black



Front Side

Nominal voltage	208 VAC / 240 VAC
Maximum power	9.984W (@208VAC) / 11.520W (@240VAC)
Unit dimensions (LxWxH)	17.60 × 45.63 × 3.54 inches 447 x 1159 x 90 mm
Total height (including support set)	4.65 inches 118 mm
Minimum cabinet width	47.24 inches 1200 mm
Minimum countertop depth	25.59 inches 650 mm
Countertop thickness	0.16-1.38 inches 4-35 mm
Type of cooking system	Induction
Model edition	Black



Gas cooking



Gas assortment

PITT Cooking offers a range of 21 different gas setups, all of which can be combined. Your ideal custom cooking setup can be tailored to your cooking habits and available kitchen space.



Burner 'Small'
Power: 0.3-2 kW



Burner 'Medium'
Power: 0.3-3 kW



Burner 'Wok/simmer'*
Power: 0.2-5 kW

*Includes wok ring

All models are available in Professional Edition or Black Edition, with Top Side or Front Side control.

Each model featuring at least one wok/simmer burner comes with a wok ring.

* Top Side models can be used outdoors.

Akan*



Altar*



Azuma*



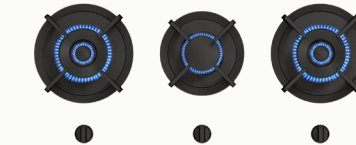
Cima*



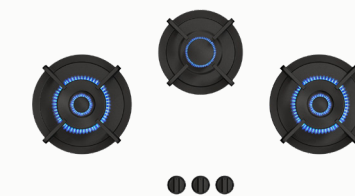
Capital*



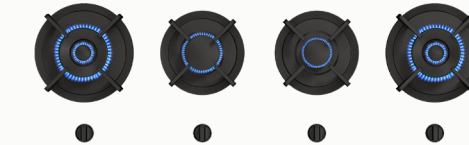
Cusin



Colo



Danau



Air*



Baluran*



Bennett*



Drum



Dempo



Elbrus



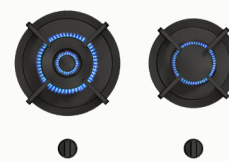
Enep



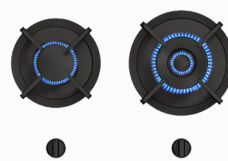
Ebeko



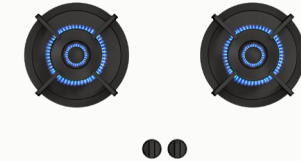
Baula*



Bely*



Bromo



Foessa



Choose your burner style

Black Edition

Burners made of solid brass with a black coating. Bold and refined.



Professional Edition

Burners made of solid brass. For those who want to cook in style.



Akan



Power output	1x 0,3-2 kW
Type of cooking system	Natural Gas/LPG
Model edition	Professional Black
Unit dimensions (LxWxH)	19.8 × 8.39 × 3.50 inches 503 x 213 x 89 mm
Total height (including support set)	4.69 inches 119 mm
Minimum cabinet width	11.81 inches 300 mm
Minimum countertop depth	23.62 inches 600 mm
Countertop Thickness	0.16-1.38 inches 4 - 35 mm



Power output	1x 0,3-2 kW
Type of cooking system	Natural Gas/LPG
Model edition	Professional Black
Unit dimensions (LxWxH)	19.8 × 8.39 × 5.28 inches 503 x 213 x 134 mm
Total height (including support set)	6.46 inches 164 mm
Minimum cabinet width	11.81 inches 300 mm
Minimum countertop depth	25.59 inches 650 mm
Countertop Thickness	0.16-0.98 inches 4 - 25 mm



Altar



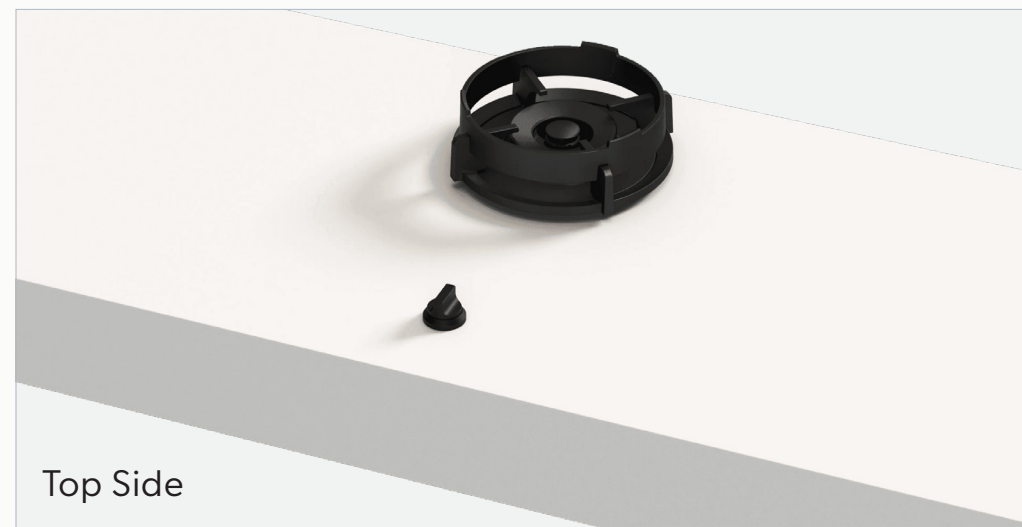
Power output	1x 0,3-3 kW
Type of cooking system	Natural Gas/LPG
Model edition	Professional Black
Unit dimensions (LxWxH)	19.8 × 8.39 × 3.50 inches 503 x 213 x 89 mm
Total height (including support set)	4.69 inches 119 mm
Minimum cabinet width	11.81 inches 300 mm
Minimum countertop depth	23.62 inches 600 mm
Countertop Thickness	0.16-1.38 inches 4 - 35 mm



Power output	1x 0,3-3 kW
Type of cooking system	Natural Gas/LPG
Model edition	Professional Black
Unit dimensions (LxWxH)	19.8 × 8.39 × 5.28 inches 503 x 213 x 134 mm
Total height (including support set)	6.46 inches 164 mm
Minimum cabinet width	11.81 inches 300 mm
Minimum countertop depth	25.59 inches 650 mm
Countertop Thickness	0.16-0.98 inches 4 - 25 mm



Air



Power output	1x 0,2-5 kW
Type of cooking system	Natural Gas/LPG
Model edition	Professional Black
Unit dimensions (LxWxH)	19.8 × 8.39 × 3.50 inches 503 x 213 x 89 mm
Total height (including support set)	4.69 inches 119 mm
Minimum cabinet width	11.81 inches 300 mm
Minimum countertop depth	23.62 inches 600 mm
Countertop Thickness	0.16-1.38 inches 4 - 35 mm



Power output	1x 0,2-5 kW
Type of cooking system	Natural Gas/LPG
Model edition	Professional Black
Unit dimensions (LxWxH)	19.8 × 8.39 × 5.28 inches 503 x 213 x 134 mm
Total height (including support set)	6.46 inches 164 mm
Minimum cabinet width	11.81 inches 300 mm
Minimum countertop depth	25.59 inches 650 mm
Countertop Thickness	0.16-0.98 inches 4 - 25 mm



Azuma



Power output	1x 0,2-5 kW
Type of cooking system	Natural Gas/LPG
Model edition	Professional Black
Unit dimensions (LxWxH)	19.8 × 8.39 × 3.50 inches 503 x 213 x 89 mm
Total height (including support set)	4.69 inches 119 mm
Minimum cabinet width	11.81 inches 300 mm
Minimum countertop depth	23.62 inches 600 mm
Countertop Thickness	0.16-1.38 inches 4 - 35 mm



Power output	1x 0,2-5 kW
Type of cooking system	Natural Gas/LPG
Model edition	Professional Black
Unit dimensions (LxWxH)	19.8 × 8.39 × 5.28 inches 503 x 213 x 134 mm
Total height (including support set)	6.46 inches 164 mm
Minimum cabinet width	11.81 inches 300 mm
Minimum countertop depth	25.59 inches 650 mm
Countertop Thickness	0.16-0.98 inches 4 - 25 mm



Baluran



Top Side

Power output	1x 0,3-3 kW, 1x 0,2-5 kW
Type of cooking system	Natural Gas/LPG
Model edition	Professional Black
Unit dimensions (LxWxH)	19.80 × 20.98 × 3.50 inches 503 x 533 x 89 mm
Total height (including support set)	4.69 inches 119 mm
Minimum cabinet width	23.62 inches 600 mm
Minimum countertop depth	23.62 inches 600 mm
Countertop Thickness	0.16-1.38 inches 4 - 35 mm

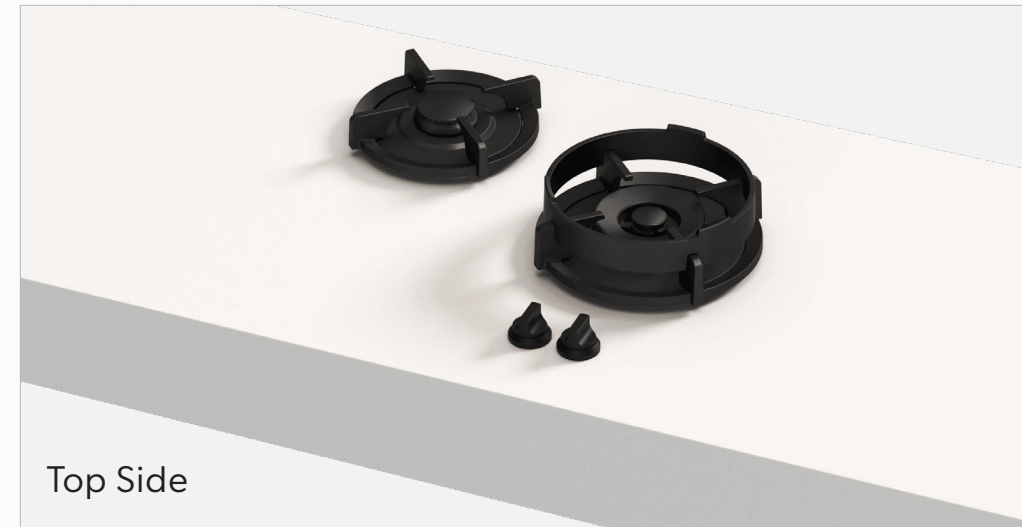


Front Side

Power output	1x 0,3-3 kW, 1x 0,2-5 kW
Type of cooking system	Natural Gas/LPG
Model edition	Professional Black
Unit dimensions (LxWxH)	19.80 × 20.98 × 5.28 inches 503 x 533 x 134 mm
Total height (including support set)	6.46 inches 164 mm
Minimum cabinet width	23.62 inches 600 mm
Minimum countertop depth	25.59 inches 650 mm
Countertop Thickness	0.16-0.98 inches 4 - 25 mm



Bennett



Top Side

Power output	1x 0,3-2 kW, 1x 0,2-5 kW
Type of cooking system	Natural Gas/LPG
Model edition	Professional Black
Unit dimensions (LxWxH)	19.80 × 20.98 × 3.50 inches 503 x 533 x 89 mm
Total height (including support set)	4.69 inches 119 mm
Minimum cabinet width	23.62 inches 600 mm
Minimum countertop depth	23.62 inches 600 mm
Countertop Thickness	0.16-1.38 inches 4 - 35 mm



Front Side

Power output	1x 0,3-2 kW, 1x 0,2-5 kW
Type of cooking system	Natural Gas/LPG
Model edition	Professional Black
Unit dimensions (LxWxH)	19.80 × 20.98 × 5.28 inches 503 x 533 x 134 mm
Total height (including support set)	6.46 inches 164 mm
Minimum cabinet width	23.62 inches 600 mm
Minimum countertop depth	25.59 inches 650 mm
Countertop Thickness	0.16-0.98 inches 4 - 25 mm



Baula



Power output	1x 0,3-3 kW, 1x 0,2-5 kW
Type of cooking system	Natural Gas/LPG
Model edition	Professional Black
Unit dimensions (LxWxH)	15.87 × 20.98 × 3.50 inches 403 x 533 x 89 mm
Total height (including support set)	4.69 inches 119 mm
Minimum cabinet width	23.62 inches 600 mm
Minimum countertop depth	23.62 inches 600 mm
Countertop Thickness	0.16-1.38 inches 4 - 35 mm



Power output	1x 0,3-3 kW, 1x 0,2-5 kW
Type of cooking system	Natural Gas/LPG
Model edition	Professional Black
Unit dimensions (LxWxH)	15.87 × 20.98 × 5.28 inches 403 x 533 x 134 mm
Total height (including support set)	6.46 inches 164 mm
Minimum cabinet width	23.62 inches 600 mm
Minimum countertop depth	25.59 inches 650 mm
Countertop Thickness	0.16-0.98 inches 4 - 25 mm



Bely



Power output	1x 0,3-2 kW, 1x 0,2-5 kW
Type of cooking system	Natural Gas/LPG
Model edition	Professional Black
Unit dimensions (LxWxH)	15.87 × 20.98 × 3.50 inches 403 x 533 x 89 mm
Total height (including support set)	4.69 inches 119 mm
Minimum cabinet width	23.62 inches 600 mm
Minimum countertop depth	23.62 inches 600 mm
Countertop Thickness	0.16-1.38 inches 4 - 35 mm



Power output	1x 0,3-2 kW, 1x 0,2-5 kW
Type of cooking system	Natural Gas/LPG
Model edition	Professional Black
Unit dimensions (LxWxH)	15.87 × 20.98 × 5.28 inches 403 x 533 x 134 mm
Total height (including support set)	6.46 inches 164 mm
Minimum cabinet width	23.62 inches 600 mm
Minimum countertop depth	25.59 inches 650 mm
Countertop Thickness	0.16-0.98 inches 4 - 25 mm



Bromo



Power output	2x 0,2-5 kW
Type of cooking system	Natural Gas/LPG
Model edition	Professional Black
Unit dimensions (LxWxH)	19.80 × 25.71 × 3.50 inches 503 x 653 x 89 mm
Total height (including support set)	4.69 inches 119 mm
Minimum cabinet width	27.56 inches 700 mm
Minimum countertop depth	23.62 inches 600 mm
Countertop Thickness	0.16-1.38 inches 4 - 35 mm



Power output	2x 0,2-5 kW
Type of cooking system	Natural Gas/LPG
Model edition	Professional Black
Unit dimensions (LxWxH)	19.80 × 25.71 × 5.28 inches 503 x 653 x 134 mm
Total height (including support set)	6.46 inches 164 mm
Minimum cabinet width	27.56 inches 700 mm
Minimum countertop depth	25.59 inches 650 mm
Countertop Thickness	0.16-0.98 inches 4 - 25 mm



Cima



Power output	1x 0,3-2 kW, 1x 0,3-3 kW, 1x 0,2-5 kW
Type of cooking system	Natural Gas/LPG
Model edition	Professional Black
Unit dimensions (LxWxH)	19.80 × 20.98 × 3.50 inches 503 x 533 x 89 mm
Total height (including support set)	4.69 inches 119 mm
Minimum cabinet width	23.62 inches 600 mm
Minimum countertop depth	23.62 inches 600 mm
Countertop Thickness	0.16-1.38 inches 4 - 35 mm



Power output	1x 0,3-2 kW, 1x 0,3-3 kW, 1x 0,2-5 kW
Type of cooking system	Natural Gas/LPG
Model edition	Professional Black
Unit dimensions (LxWxH)	19.80 × 20.98 × 5.28 inches 503 x 533 x 134 mm
Total height (including support set)	6.46 inches 164 mm
Minimum cabinet width	23.62 inches 600 mm
Minimum countertop depth	25.59 inches 650 mm
Countertop Thickness	0.16-0.98 inches 4 - 25 mm



Capital



Top Side

Power output	1x 0,3-2 kW, 1x 0,3-3 kW, 1x 0,2-5 kW
Type of cooking system	Natural Gas/LPG
Model edition	Professional Black
Unit dimensions (LxWxH)	19.80 × 20.98 × 3.50 inches 503 x 533 x 89 mm
Total height (including support set)	4.69 inches 119 mm
Minimum cabinet width	23.62 inches 600 mm
Minimum countertop depth	23.62 inches 600 mm
Countertop Thickness	0.16-1.38 inches 4 - 35 mm



Front Side

Power output	1x 0,3-2 kW, 1x 0,3-3 kW, 1x 0,2-5 kW
Type of cooking system	Natural Gas/LPG
Model edition	Professional Black
Unit dimensions (LxWxH)	19.80 × 20.98 × 5.28 inches 503 x 533 x 134 mm
Total height (including support set)	6.46 inches 164 mm
Minimum cabinet width	23.62 inches 600 mm
Minimum countertop depth	25.59 inches 650 mm
Countertop Thickness	0.16-0.98 inches 4 - 25 mm



Cusin



Top Side

Power output	1x 0,3-2 kW, 2x 0,2-5 kW
Type of cooking system	Natural Gas/LPG
Model edition	Professional Black
Unit dimensions (LxWxH)	15.87 × 33.58 × 3.50 inches 403 x 853 x 89 mm
Total height (including support set)	4.69 inches 119 mm
Minimum cabinet width	35.43 inches 900 mm
Minimum countertop depth	23.62 inches 600 mm
Countertop Thickness	0.16-1.38 inches 4 - 35 mm



Front Side

Power output	1x 0,3-2 kW, 2x 0,2-5 kW
Type of cooking system	Natural Gas/LPG
Model edition	Professional Black
Unit dimensions (LxWxH)	15.87 × 33.58 × 5.28 inches 403 x 853 x 134 mm
Total height (including support set)	6.46 inches 164 mm
Minimum cabinet width	35.43 inches 900 mm
Minimum countertop depth	25.59 inches 650 mm
Countertop Thickness	0.16-0.98 inches 4 - 25 mm



Colo



Top Side

Power output	1x 0,3-2 kW, 2x 0,2-5 kW
Type of cooking system	Natural Gas/LPG
Model edition	Professional Black
Unit dimensions (LxWxH)	19.80 × 33.58 × 3.50 inches 503 x 853 x 89 mm
Total height (including support set)	4.69 inches 119 mm
Minimum cabinet width	35.43 inches 900 mm
Minimum countertop depth	23.62 inches 600 mm
Countertop Thickness	0.16-1.38 inches 4 - 35 mm



Front Side

Power output	1x 0,3-2 kW, 2x 0,2-5 kW
Type of cooking system	Natural Gas/LPG
Model edition	Professional Black
Unit dimensions (LxWxH)	19.80 × 33.58 × 5.28 inches 503 x 853 x 134 mm
Total height (including support set)	6.46 inches 164 mm
Minimum cabinet width	35.43 inches 900 mm
Minimum countertop depth	25.59 inches 650 mm
Countertop Thickness	0.16-0.98 inches 4 - 25 mm



Danau



Top Side

Power output	1x 0,3-2 kW, 1x 0,3-3 kW, 2x 0,2-5 kW
Type of cooking system	Natural Gas/LPG
Model edition	Professional Black
Unit dimensions (LxWxH)	15.87 × 45.59 × 3.50 inches 403 x 1157 x 89 mm
Total height (including support set)	4.69 inches 119 mm
Minimum cabinet width	47.24 inches 1200 mm
Minimum countertop depth	23.62 inches 600 mm
Countertop Thickness	0.16-1.38 inches 4 - 35 mm



Front Side

Power output	1x 0,3-2 kW, 1x 0,3-3 kW, 2x 0,2-5 kW
Type of cooking system	Natural Gas/LPG
Model edition	Professional Black
Unit dimensions (LxWxH)	15.87 × 45.59 × 5.28 inches 403 x 1157 x 134 mm
Total height (including support set)	6.46 inches 164 mm
Minimum cabinet width	47.24 inches 1200 mm
Minimum countertop depth	25.59 inches 650 mm
Countertop Thickness	0.16-0.98 inches 4 - 25 mm



Drum



Power output	1x 0,3-2 kW, 1x 0,3-3 kW, 2x 0,2-5 kW
Type of cooking system	Natural Gas/LPG
Model edition	Professional Black
Unit dimensions (LxWxH)	19.80 × 45.59 × 3.50 inches 503 x 1157 x 89 mm
Total height (including support set)	4.69 inches 119 mm
Minimum cabinet width	47.24 inches 1200 mm
Minimum countertop depth	23.62 inches 600 mm
Countertop Thickness	0.16-1.38 inches 4 - 35 mm



Power output	1x 0,3-2 kW, 1x 0,3-3 kW, 2x 0,2-5 kW
Type of cooking system	Natural Gas/LPG
Model edition	Professional Black
Unit dimensions (LxWxH)	19.80 × 45.59 × 5.28 inches 503 x 1157 x 134 mm
Total height (including support set)	6.46 inches 164 mm
Minimum cabinet width	47.24 inches 1200 mm
Minimum countertop depth	25.59 inches 650 mm
Countertop Thickness	0.16-0.98 inches 4 - 25 mm



Dempo



Power output	1x 0,3-2 kW, 1x 0,3-3 kW, 2x 0,2-5 kW
Type of cooking system	Natural Gas/LPG
Model edition	Professional Black
Unit dimensions (LxWxH)	19.80 × 33.58 × 3.50 inches 503 x 853 x 89 mm
Total height (including support set)	4.69 inches 119 mm
Minimum cabinet width	35.43 inches 900 mm
Minimum countertop depth	23.62 inches 600 mm
Countertop Thickness	0.16-1.38 inches 4 - 35 mm



Power output	1x 0,3-2 kW, 1x 0,3-3 kW, 2x 0,2-5 kW
Type of cooking system	Natural Gas/LPG
Model edition	Professional Black
Unit dimensions (LxWxH)	19.80 × 33.58 × 5.28 inches 503 x 853 x 134 mm
Total height (including support set)	6.46 inches 164 mm
Minimum cabinet width	35.43 inches 900 mm
Minimum countertop depth	25.59 inches 650 mm
Countertop Thickness	0.16-0.98 inches 4 - 25 mm



Elbrus



Power output	2x 0,3-2 kW, 2x 0,3-3 kW, 1x 0,2-5 kW
Type of cooking system	Natural Gas/LPG
Model edition	Professional Black
Unit dimensions (LxWxH)	19.80 × 33.58 × 3.50 inches 503 x 853 x 89 mm
Total height (including support set)	4.69 inches 119 mm
Minimum cabinet width	35.43 inches 900 mm
Minimum countertop depth	23.62 inches 600 mm
Countertop Thickness	0.16-1.38 inches 4 - 35 mm



Power output	2x 0,3-2 kW, 2x 0,3-3 kW, 1x 0,2-5 kW
Type of cooking system	Natural Gas/LPG
Model edition	Professional Black
Unit dimensions (LxWxH)	19.80 × 33.58 × 5.28 inches 503 x 853 x 134 mm
Total height (including support set)	6.46 inches 164 mm
Minimum cabinet width	35.43 inches 900 mm
Minimum countertop depth	25.59 inches 650 mm
Countertop Thickness	0.16-0.98 inches 4 - 25 mm



Ebeko



Power output	2x 0,3-2 kW, 2x 0,3-3 kW, 1x 0,2-5 kW
Type of cooking system	Natural Gas/LPG
Model edition	Professional Black
Unit dimensions (LxWxH)	19.80 × 33.58 × 3.50 inches 503 x 853 x 89 mm
Total height (including support set)	4.69 inches 119 mm
Minimum cabinet width	35.43 inches 900 mm
Minimum countertop depth	23.62 inches 600 mm
Countertop Thickness	0.16-1.38 inches 4 - 35 mm



Power output	2x 0,3-2 kW, 2x 0,3-3 kW, 1x 0,2-5 kW
Type of cooking system	Natural Gas/LPG
Model edition	Professional Black
Unit dimensions (LxWxH)	19.80 × 33.58 × 5.28 inches 503 x 853 x 134 mm
Total height (including support set)	6.46 inches 164 mm
Minimum cabinet width	35.43 inches 900 mm
Minimum countertop depth	25.59 inches 650 mm
Countertop Thickness	0.16-0.98 inches 4 - 25 mm



Enep



Top Side

Power output	2x 0,3-2 kW, 2x 0,3-3 kW, 1x 0,2-5 kW
Type of cooking system	Natural Gas/LPG
Model edition	Professional Black
Unit dimensions (LxWxH)	19.80 × 33.58 × 3.50 inches 503 x 853 x 89 mm
Total height (including support set)	4.69 inches 119 mm
Minimum cabinet width	35.43 inches 900 mm
Minimum countertop depth	23.62 inches 600 mm
Countertop Thickness	0.16-1.38 inches 4 - 35 mm



Front Side

Power output	2x 0,3-2 kW, 2x 0,3-3 kW, 1x 0,2-5 kW
Type of cooking system	Natural Gas/LPG
Model edition	Professional Black
Unit dimensions (LxWxH)	19.80 × 33.58 × 5.28 inches 503 x 853 x 134 mm
Total height (including support set)	6.46 inches 164 mm
Minimum cabinet width	35.43 inches 900 mm
Minimum countertop depth	25.59 inches 650 mm
Countertop Thickness	0.16-0.98 inches 4 - 25 mm



Foessa



Top Side

Power output	2x 0,3-2 kW, 2x 0,3-3 kW, 2x 0,2-5 kW
Type of cooking system	Natural Gas/LPG
Model edition	Professional Black
Unit dimensions (LxWxH)	19.80 × 45.59 × 3.50 inches 503 x 1157 x 89 mm
Total height (including support set)	4.69 inches 119 mm
Minimum cabinet width	47.24 inches 1200 mm
Minimum countertop depth	23.62 inches 600 mm
Countertop Thickness	0.16-1.38 inches 4 - 35 mm

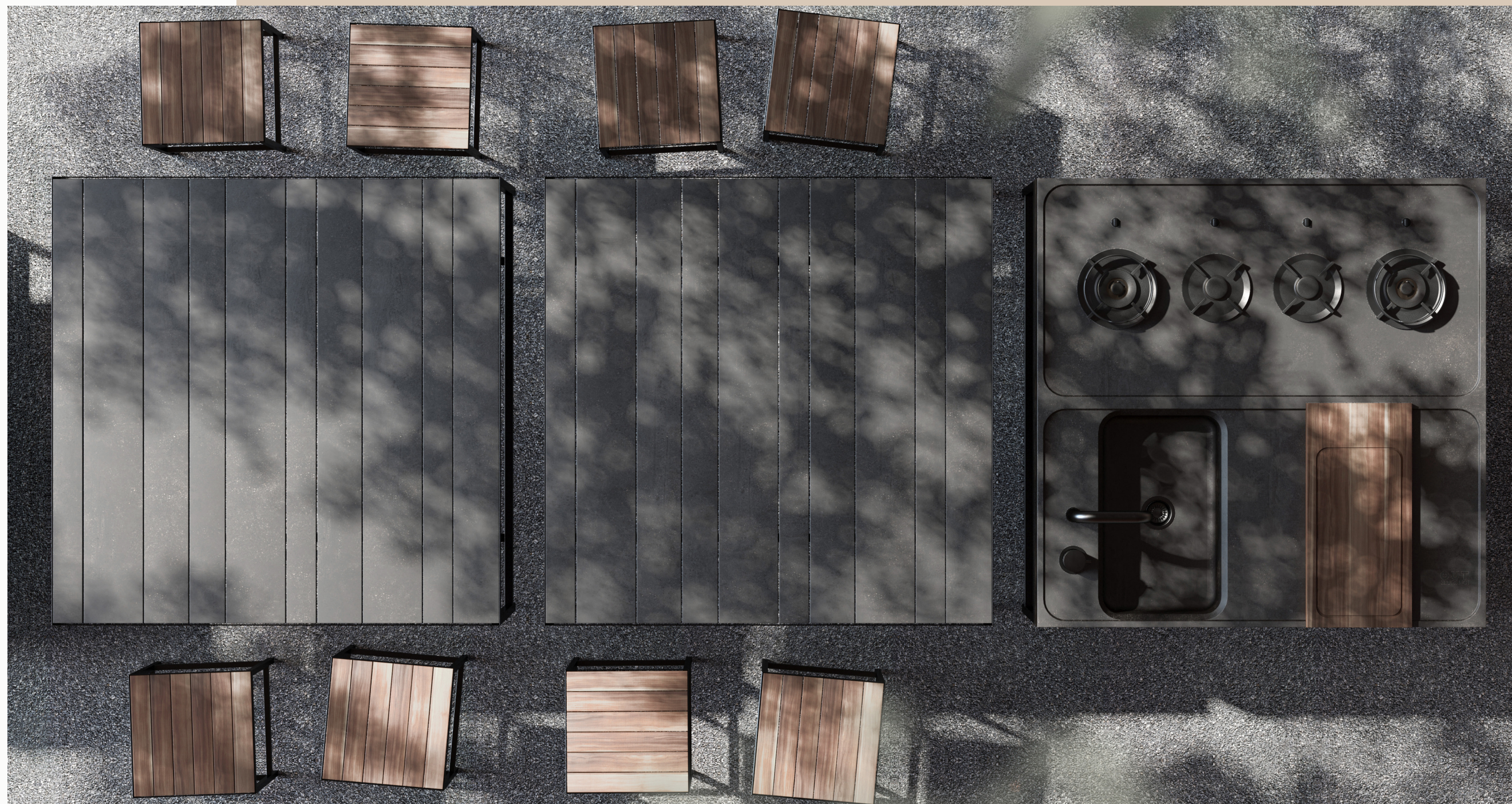


Front Side

Power output	2x 0,3-2 kW, 2x 0,3-3 kW, 2x 0,2-5 kW
Type of cooking system	Natural Gas/LPG
Model edition	Professional Black
Unit dimensions (LxWxH)	19.80 × 45.59 × 5.28 inches 503 x 1157 x 134 mm
Total height (including support set)	6.46 inches 164 mm
Minimum cabinet width	47.24 inches 1200 mm
Minimum countertop depth	25.59 inches 650 mm
Countertop Thickness	0.16-0.98 inches 4 - 25 mm



Outdoor





The power of indoors,
now outdoors

Complete Outdoor Kit

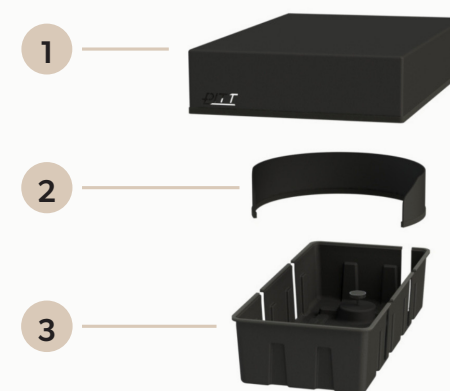
PITT Cooking brings the perfect cooking experience outdoors with the new PITT Cooking Outdoor set. This modular system combines powerful burners with specially developed protection for use in outdoor kitchens, on terraces, and even on boats.

Each Outdoor Kit includes:

- 1 Durable cover for after-use protection
- 2 Windshields for optimal flame protection
- 3 Protective tray against moisture and dirt

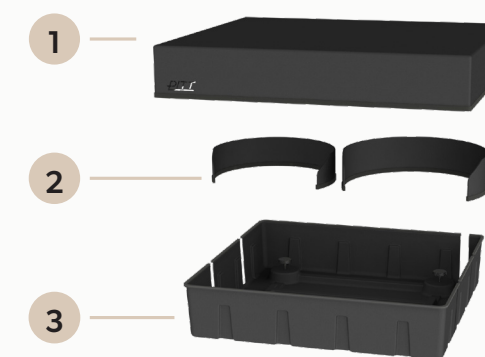


Type A



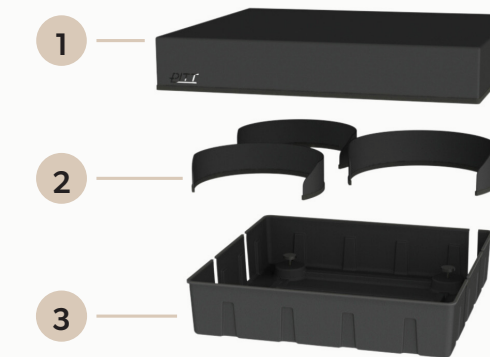
PITT Cooking Outdoor Kit 'Type A' is suitable for the following 1-burner setups: Akan, Altar, Azuma & Air.

Type B



PITT Cooking Outdoor Kit 'Type B' is suitable for the following 2-burner setups: Baluran, Bennett, Baula & Bely.

Type C



PITT Cooking Outdoor Kit 'Type C' is suitable for the following 3-burner setups: Cima & Capital.

Terms and warranty

General terms and conditions

The general terms and conditions apply to all PITT Cooking products and can be found via the QR code below. These terms are available in Dutch and English.



Warranty terms

The warranty terms apply to all PITT Cooking products and can be found via the QR code below. These terms are available in Dutch and English.



Contact

PITT Cooking

Damzigt 54

3454 PS De Meern

The Netherlands

Communication

Phone: +1 720-924-9948

General inquiries: info@pittcookingamerica.com

Sales

Mail: sales@pittcookingamerica.com

Phone: +1 720-924-9948 extension 1

Service

Mail: service@pittcookingamerica.com

Phone: +1 720-924-9948 extension 2

Order status

Mail: sales@pittcookingamerica.com

Phone: +1 720-924-9948 extension 3

Downloads

The following documents are also available on our website.

Induction

Gas

Outdoor

User manual



Installation manual



Front Side



Top Side



Design & processing guidelines



Service you can rely on

We take pride in our products and their quality. With a dedicated service team, we ensure that you can always rely on PITT Cooking. Whether you need help with installation, maintenance, or have questions about your product, we are here for you.

Contact us via:

- Phone: +1 (720) 924-9948
- Email: service@pittcookingamerica.com

PITT Cooking

info@pittcookingamerica.com

+ (720) 924-9948

www.pittcookingamerica.com

PITT
COOKING